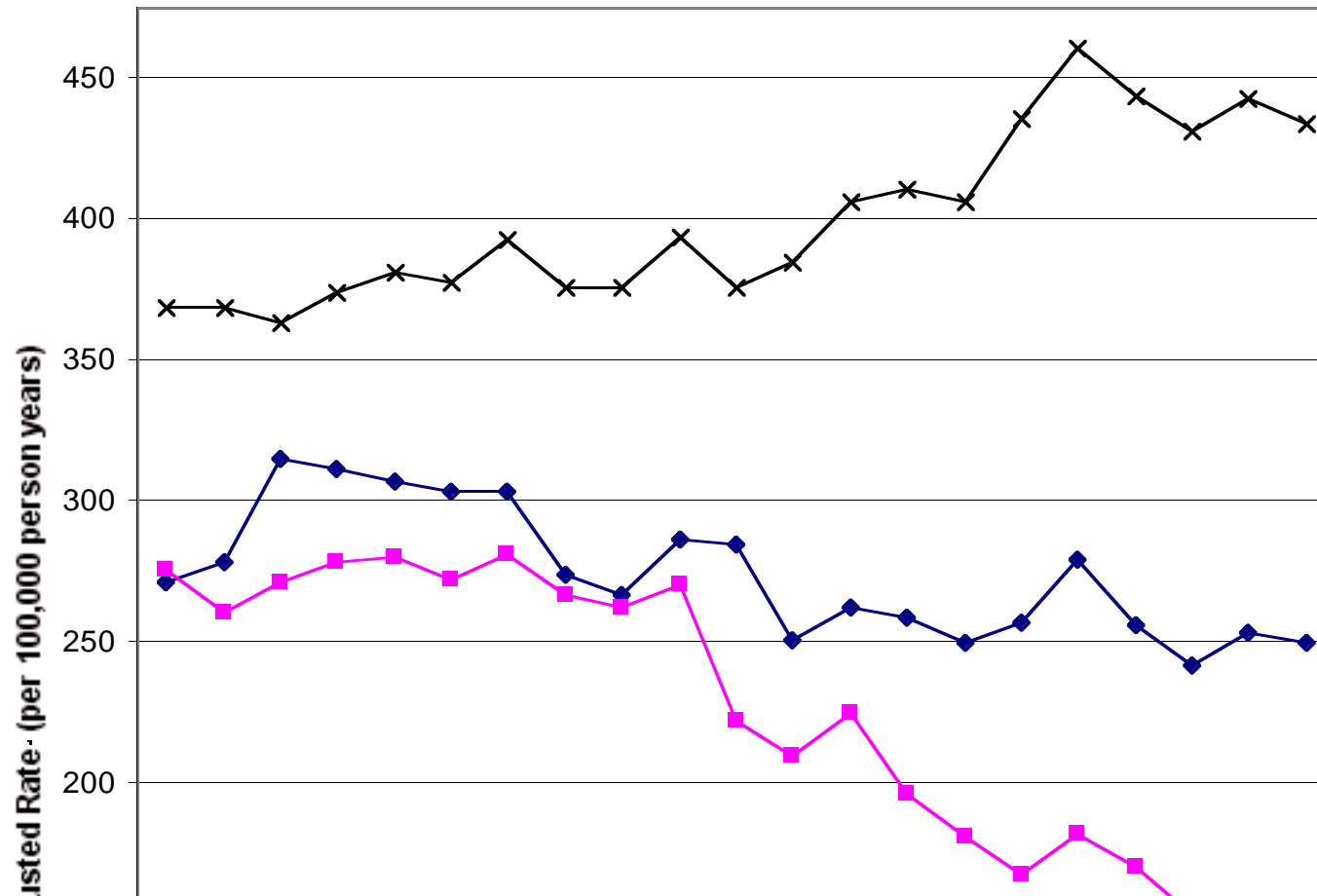


# Trends in Non-fatal Injury

Number 18

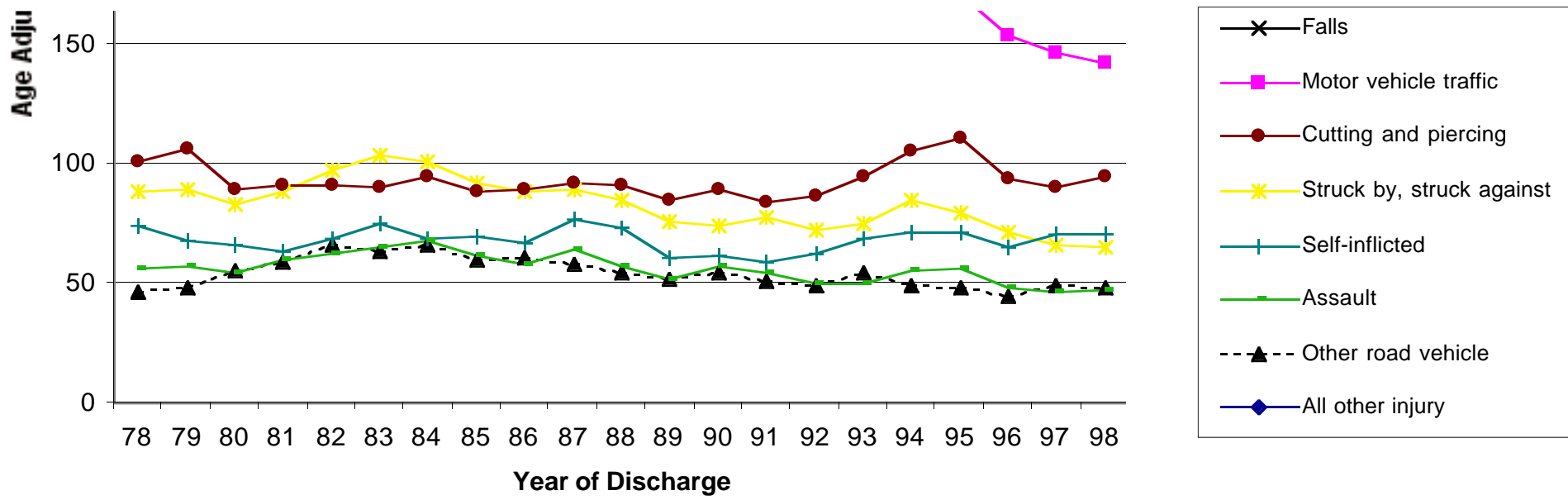
The following graphs and tables show trends in rates and percentages for non-fatal injury resulting in inpatient treatment in New Zealand public hospitals.

**Rates for Major Categories of Non-fatal Injury Hospitalisation, New Zealand 1978-1998**



## Highlights

- Commencing in 1988 there has been a substantive and steady decline in the rate of non-fatal injury from motor vehicle traffic crashes.
- There has been a steady decline since 1981 in the rate for "All other injury".
- There has been a gradual decline over the entire period in the "Struck by, struck against" injury rate.
- There has been a steady increase in the rate of injury from falls over the entire period.
- Rates for self-inflicted injury, assault, cutting and piercing and other road vehicle injury have remained relatively stable.



Age Adjusted Rates<sup>1</sup> per 100,000 person years

	Year of Discharge																				
	1978	1979	1980	1981	1982	1983	1984	1985	1986	1987	1988	1989	1990	1991	1992	1993	1994	1995	1996	1997	1998
<i>Falls</i>	369	368	363	374	381	378	393	376	376	393	376	385	406	411	407	436	461	444	431	443	434
<i>Motor vehicle traffic</i>	276	260	271	278	281	273	281	267	262	271	222	210	225	197	182	168	182	170	153	146	142
<i>Cutting and piercing</i>	101	106	89	91	91	90	94	89	89	92	91	85	90	84	86	95	105	110	93	91	94
<i>Struck by, struck against</i>	88	89	83	88	98	103	101	92	88	89	85	76	74	77	72	75	84	80	71	66	65
<i>Self-inflicted</i>	74	68	66	64	69	75	69	69	67	77	73	61	61	59	62	69	71	72	66	70	70
<i>Assault</i>	56	57	54	60	63	65	68	62	58	64	57	52	57	54	50	50	56	56	48	46	48
<i>Other road vehicle</i>	46	48	55	59	66	63	66	59	60	58	54	52	54	51	49	54	49	48	45	49	48
<i>All other injury</i> <sup>2</sup>	271	279	315	311	307	304	304	275	267	287	285	251	263	259	250	257	280	256	242	253	250
<i>Total</i>	1281	1276	1297	1324	1356	1350	1375	1289	1268	1331	1243	1171	1231	1192	1159	1204	1288	1237	1150	1164	1151

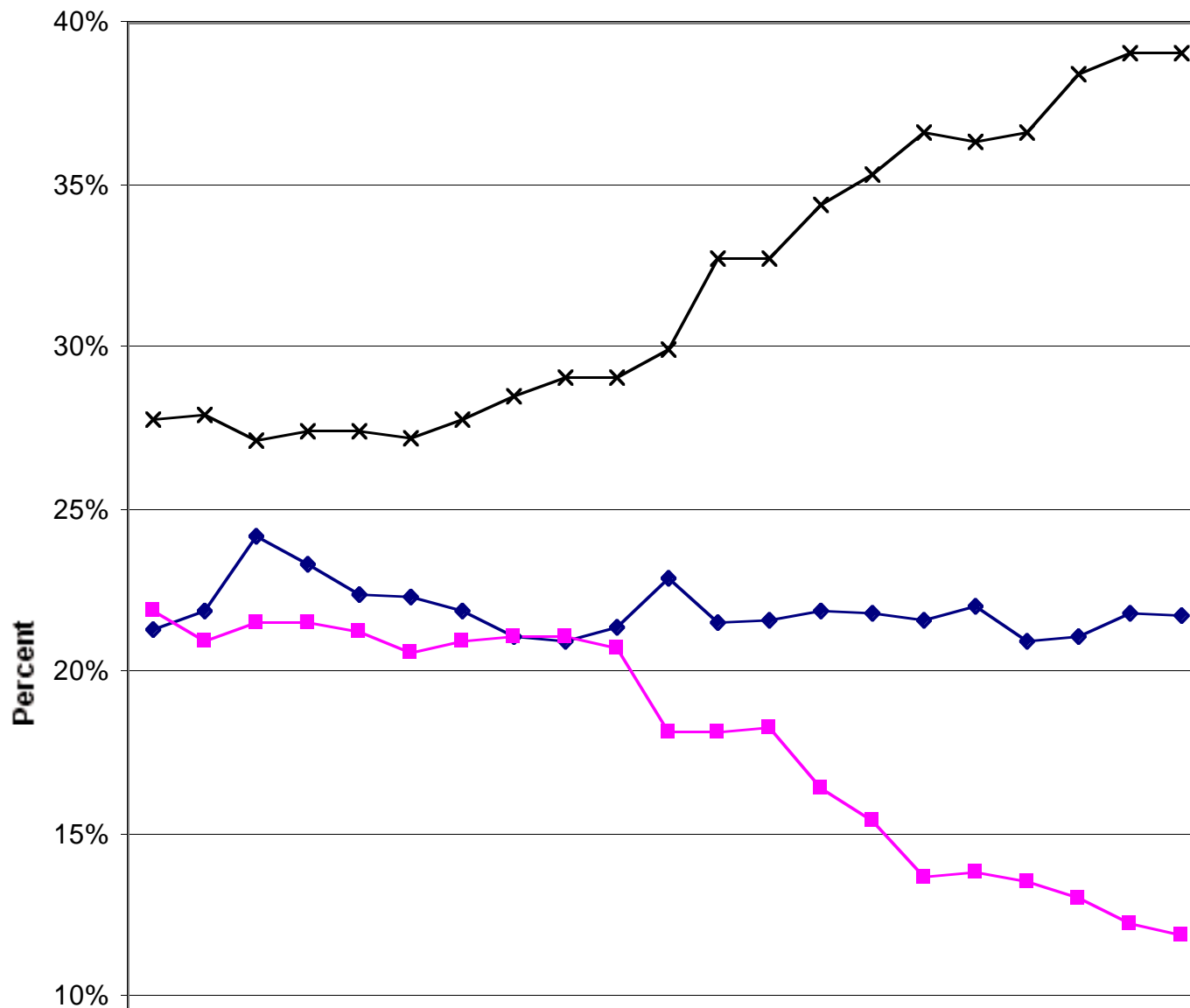
Footnotes

<sup>1</sup> Age adjustment compensates for any changes in rates due to changes in the age distribution of the population over time.

<sup>2</sup> "All other injury" includes incidents that contribute less than 4% of the total injury in any of the years between 1978 and 1998.

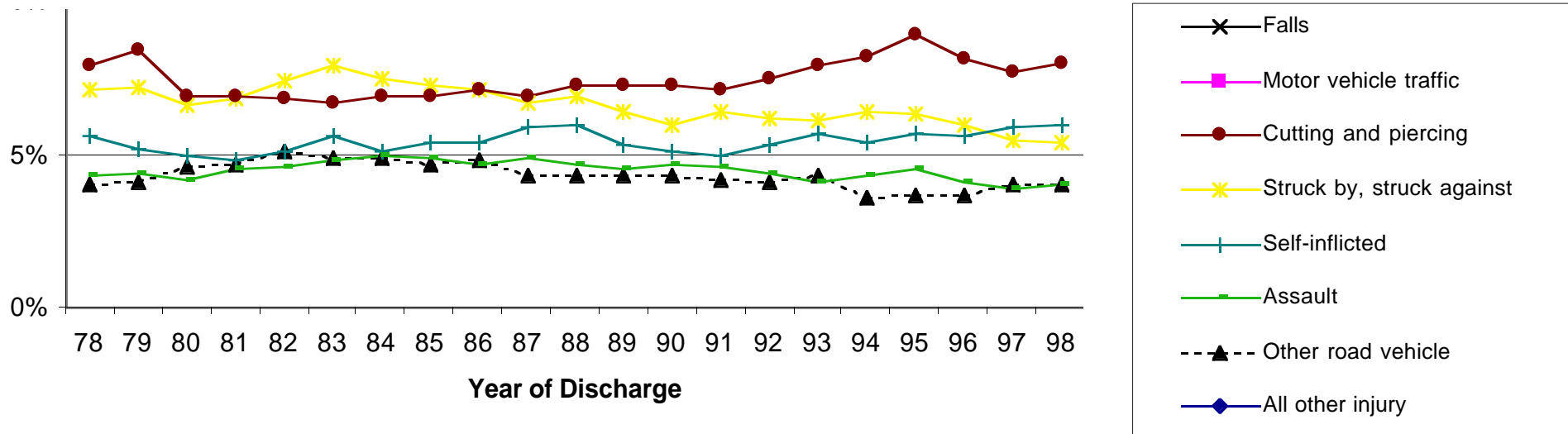
Note: Hospitalisation data were obtained from the National Minimum Dataset maintained by the NZHIS. This database includes virtually all discharges from public hospitals with a primary diagnosis of injury. The rates and percentages reported exclude: readmissions for prior injury, day stays of <1 day, those discharged dead, adverse effects due to drugs and medical complications.

**Percentages for Major Categories of Non-Fatal Injury Hospitalisation, New Zealand 1978-1998**



**Highlights**

- In 1978 falls accounted for 28%, and motor vehicle traffic crashes accounted for 22% of all non-fatal injuries resulting in inpatient treatment in public hospitals.
- By 1998 falls accounted for 39%, and motor vehicle traffic crashes accounted for 12% of all injuries.
- These dramatic changes are due to two factors:
  - a 49% increase in the number of falls.
  - a 43% decrease in the number of motor vehicle traffic crashes.
- The percentage of injuries resulting from all the other defined categories and from "All other injury" have remained relatively stable for the period.



**Percentages\***

**Year of Discharge**

	1978	1979	1980	1981	1982	1983	1984	1985	1986	1987	1988	1989	1990	1991	1992	1993	1994	1995	1996	1997	1998
<i>Falls</i>	28	28	27	27	27	27	28	29	29	29	30	33	33	34	35	37	36	37	38	39	39
<i>Motor vehicle traffic</i>	22	21	22	22	21	21	21	21	21	21	18	18	18	16	15	14	14	14	13	12	12
<i>Cutting and piercing</i>	8	8	7	7	7	7	7	7	7	7	7	7	7	7	8	8	8	9	8	8	8
<i>Struck by, struck against</i>	7	7	7	7	7	8	8	7	7	7	7	6	6	6	6	6	6	6	6	6	5
<i>Self-inflicted</i>	6	5	5	5	5	6	5	5	5	6	6	5	5	5	5	6	5	6	6	6	6
<i>Assault</i>	4	4	4	5	5	5	5	5	5	5	5	5	5	5	4	4	4	5	4	4	4
<i>Other road vehicle</i>	4	4	5	5	5	5	5	5	5	4	4	4	4	4	4	4	4	4	4	4	4
<i>All other injury</i> <sup>1</sup>	21	22	24	23	22	22	22	21	21	21	23	22	22	22	22	22	22	21	21	22	22

\* Percentages have been rounded

<i>Total of All Injury (count)</i>	40923	40695	41434	42609	43786	44023	45381	42847	42266	44392	41665	39330	41142	40240	39657	41557	44892	43813	42239	43344	43265
------------------------------------	-------	-------	-------	-------	-------	-------	-------	-------	-------	-------	-------	-------	-------	-------	-------	-------	-------	-------	-------	-------	-------

Footnotes

<sup>1</sup> "All other injury" includes incidents that contribute less than 4% of the total injury in any of the years between 1978 and 1998.

Note: Hospitalisation data were obtained from the National Minimum Dataset maintained by the NZHIS. This database includes virtually all discharges from public hospitals with a primary diagnosis of injury. The rates and percentages reported exclude: readmissions for prior injury, day stays of <1 day, those discharged dead, adverse effects due to drugs and medical complications.