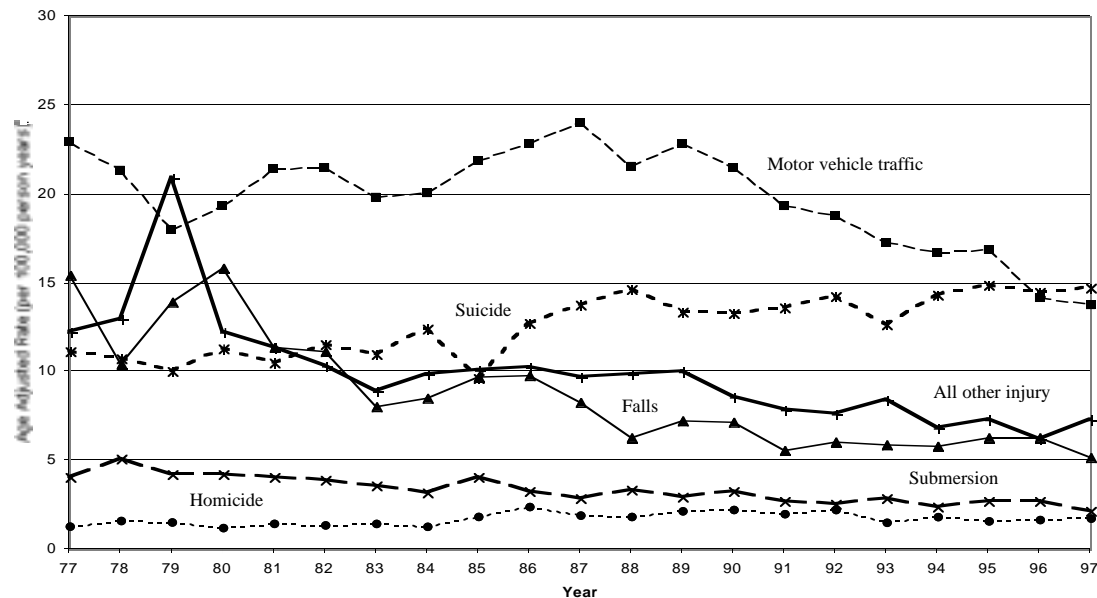


Trends in Fatal Injury

Number 17

The following graphs and tables show the trends in rates and percentages for fatal injury for major categories for New Zealand 1977-1997.

Rates for Major Categories of Fatal Injury, New Zealand 1977-1997



Highlights

- There has been a steady decline over the period in falls and submersion fatality rates.
- Analysis of inpatient data suggests that the decline in the falls fatality rate may, in part, be explained by better case management for neck of femur fractures among the elderly.
- Motor vehicle traffic crash rates have declined significantly over the last decade.
- Suicide rates increased significantly from the mid 1980s and have remained relatively stable thereafter. There have been dramatic changes in rates for specific age groups (e.g. youth rates have increased).
- Homicide has remained relatively stable.

Age Adjusted Rates ¹
Year

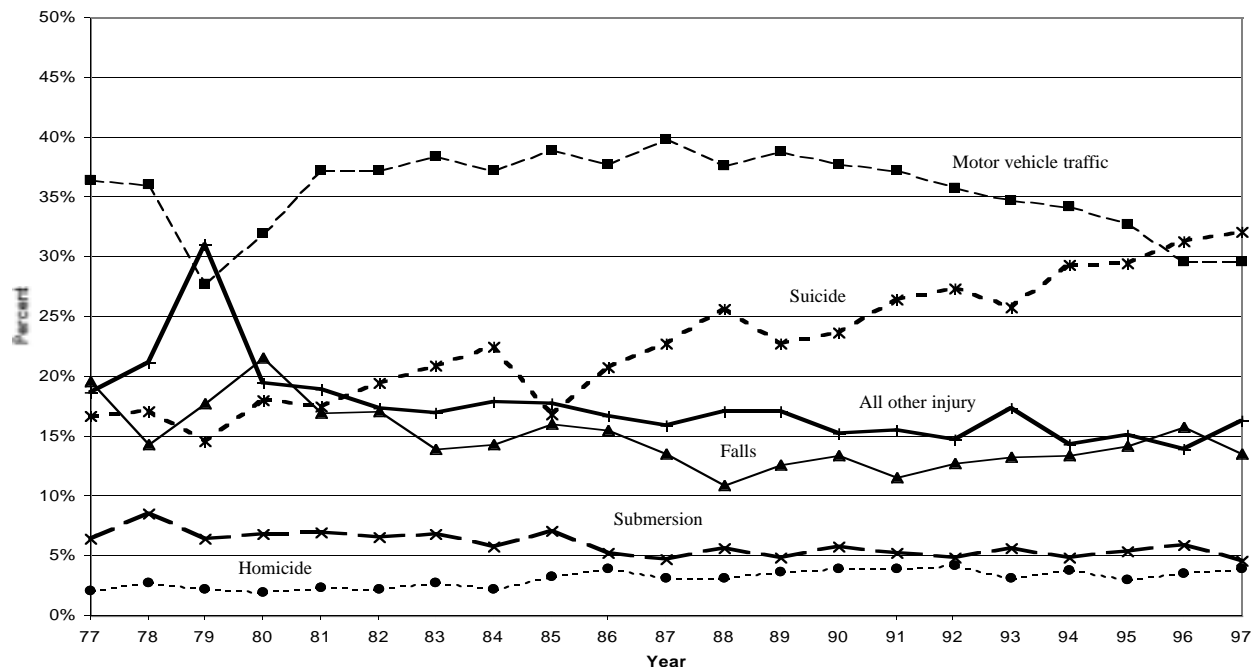
Major Category	77	78	79	80	81	82	83	84	85	86	87	88	89	90	91	92	93	94	95	96	97
Motor vehicle traffic	22.9	21.3	18.0	19.3	21.4	21.5	19.8	20.1	21.9	22.8	24.0	21.5	22.9	21.5	19.3	18.8	17.3	16.7	16.8	14.2	13.8
Falls	15.5	10.4	13.9	15.8	11.4	11.1	8.0	8.5	9.7	9.8	8.3	6.3	7.2	7.2	5.6	6.0	5.9	5.8	6.3	6.3	5.2
Submersion	4.0	5.1	4.2	4.2	4.1	3.9	3.6	3.2	4.0	3.3	2.9	3.3	2.9	3.2	2.7	2.6	2.9	2.4	2.7	2.7	2.1
Suicide	11.2	10.7	10.0	11.3	10.5	11.6	11.0	12.4	9.6	12.7	13.8	14.7	13.4	13.3	13.6	14.2	12.6	14.3	14.9	14.5	14.7
Homicide	1.3	1.6	1.5	1.2	1.4	1.4	1.5	1.2	1.8	2.3	1.9	1.8	2.2	2.2	2.0	2.2	1.5	1.8	1.6	1.6	1.8
All other injury ²	12.2	13.0	20.9	12.3	11.4	10.3	8.9	9.9	10.1	10.3	9.7	9.9	10.1	8.6	7.9	7.6	8.4	6.8	7.4	6.2	7.3
ALL	67.1	62.2	68.6	64.2	60.2	59.7	52.8	55.3	57.2	61.3	60.5	57.5	58.6	56.1	51.1	51.5	48.7	47.8	49.6	45.6	44.8

Notes

¹ Age adjustment allows one to compensate for any changes in rates that may be due to changes in the age distribution of the population over time.

² "All other injury" includes categories that did not contribute more than 4% of the total fatal injury in any of the years between 1977 and 1997.

Percentages for Major Categories of Fatal Injury, New Zealand 1977-1997



Highlights

- In 1977 suicides accounted for 17%, and motor vehicle traffic crashes (MVTC) accounted for 36%, of all injury deaths.
- By 1997 suicides accounted for 32%, and MVTC accounted for 30%, of all injury deaths.
- 1996 was the first year in two decades that the number of deaths due to suicide exceeded that for MVTC.
- These dramatic changes are due to two factors:
 - a 29% decrease in the number of MVTC.
 - a 69% increase in the number of suicides.

Percentages

Year

Major Category	77	78	79	80	81	82	83	84	85	86	87	88	89	90	91	92	93	94	95	96	97
<i>Motor vehicle traffic</i>	36.5	36.1	27.7	32.0	37.2	37.2	38.4	37.2	39.0	37.8	39.9	37.6	38.8	37.8	37.2	35.8	34.7	34.2	32.8	29.6	29.6
<i>Falls</i>	19.6	14.4	17.7	21.6	17.0	17.1	14.0	14.4	16.0	15.5	13.5	10.9	12.6	13.4	11.6	12.7	13.3	13.4	14.2	15.8	13.5
<i>Submersion</i>	6.5	8.5	6.5	6.9	7.0	6.6	6.9	5.8	7.1	5.3	4.8	5.7	4.9	5.8	5.2	4.9	5.7	4.9	5.4	5.9	4.6
<i>Suicide</i>	16.7	17.1	14.6	18.0	17.5	19.5	20.9	22.5	16.9	20.8	22.8	25.6	22.8	23.7	26.5	27.4	25.8	29.4	29.5	31.3	32.1
<i>Homicide</i>	2.1	2.7	2.3	2.0	2.4	2.3	2.8	2.2	3.3	3.9	3.1	3.1	3.7	4.0	3.9	4.2	3.1	3.8	3.0	3.5	3.9
<i>All other injury</i> ¹	18.7	21.2	31.1	19.5	19.0	17.4	17.0	17.9	17.7	16.7	15.9	17.1	17.1	15.3	15.5	14.8	17.4	14.4	15.1	14.0	16.3
<i>ALL (count)</i>	1950	1850	2035	1908	1838	1849	1673	1781	1865	2024	2018	1940	1988	1919	1772	1805	1732	1728	1813	1723	1714

Note 1 "All other injury" includes categories that did not contribute more than 4% of the total fatal injury in any of the years between 1977 and 1997.

Prepared by CS Wright, JD Langley, DM Allnatt 10 July 2000